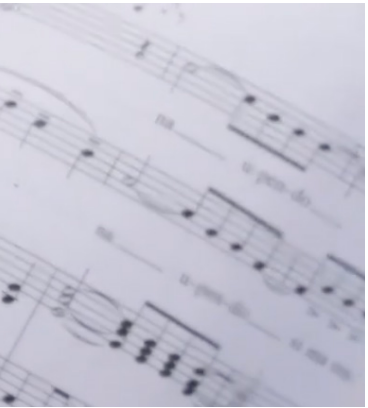
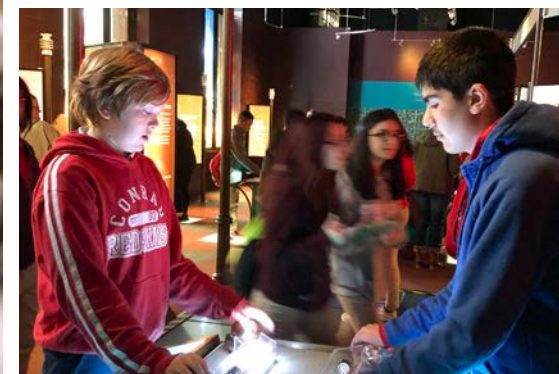


2019-20 CALENDAR / PARENT HANDBOOK



REDCLAYSCHOOLS.COM



WELCOME TO THE 2019-20 SCHOOL YEAR!

It is an honor and privilege to begin my first official year as Superintendent of Red Clay schools, and my eleventh year as a proud Red Clay parent and community member.

We have lots of fun activities and important events planned for this year as you will see in this calendar. I hope you will join us at some of these events and also connect with us on Facebook, Instagram and Twitter.

Have an outstanding school year!

Dorrell Green
Superintendent



SCHOOL HOURS

- Early Years Program: 9:00 AM - 3:50 PM
- Elementary Schools: 9:00 AM - 3:50 PM
- Middle Schools: 8:05 AM - 2:55 PM
- High Schools: 7:25 AM - 2:15 PM

Brandywine Springs School follows the middle school schedule. Cab Calloway School of the Arts, Conrad Schools of Science, and Dickinson MYP follow the high school schedule.

SNOW / EMERGENCY CLOSINGS

Should weather conditions warrant, schools and offices may be either closed, open one hour or two hours late, or dismissed early. Any such change in schedule will pertain to the entire district, and will be in effect only for the day for which it is made.

When schools are closed for the day, or opening one hour or two hours late, radio announcements and website updates will begin by 6 AM when possible. When schools are dismissed early, announcements will begin at least one hour prior to dismissal. When schools are closed or dismissed early, all afterschool and evening activities are cancelled. This includes Groves night school.

In all of these situations, Red Clay officials will send a telephone message to all parents and staff regarding the closing and will post information on redclayschools.com, schoolclosings.delaware.gov, and the district's Facebook page.

The following radio and television stations will also be notified: WDEL 101.7 FM, WSTW 93.7 FM, 6ABC, FOX29 and NBC10. Please note: Television stations provide limited information. The most detail is available on redclayschools.com, schoolclosings.delaware.gov, and radio stations.

IMMUNIZATION

Delaware state regulation requires that all students must have a complete, appropriate series of immunizations in order to attend public school. Required vaccines include 2 doses of measles, mumps, and rubella (MMR); 4 doses of polio; 5 doses of DTaP or DPT; 2 doses of Varicella or proof of disease; 3 doses of Hep B; and a Mantoux. Entering 9th and 10th graders must additionally have 1 dose of Tdap (adult booster) and 1 dose of meningococcal.

A physical exam statement by a medical doctor or nurse practitioner within the past 2 years is also required. A record of shots must be presented at the time of registration. Religious or medical exemptions will be considered with proper documentation. Parents must show proof of blood lead screening for children under 5 years.

ATHLETIC PHYSICALS

Annual physical examinations are required for all students who participate in interscholastic sports. The examination may be performed by school or private physicians, but a standard report, available from the school, must be submitted in all cases. The school retains the final authority to determine who is eligible to play. Students need only one physical for all sports unless an injury or an extended absence from school has occurred since the last examination.

ATTENDANCE, ABSENCES & EARLY DISMISSALS

Attending school regularly and on time is the key ingredient in your child’s education. Parents are legally responsible for their child’s daily attendance at school. Under Delaware’s truancy law, school-age children found out of school may be detained by police pending a determination of their status.

A student is considered to be absent from school if he/she attends school for less than 50% of the scheduled day. Absences include both excused and unexcused absences. As one of the qualifications for promotion, credit for course work, eligibility for graduation or administrative assignment, a student shall not exceed 25 days absent during the school year. For more information, please see the Student Code of Conduct.

In all cases of absence or tardiness, the student must bring a written excuse signed by a parent/ guardian. Schools will closely monitor student attendance and may contact parents to determine the status of a child who is not in school.

Requests for early dismissal, extended absences or permission to go home by other than the usual means must be made in advance by a written note signed by a parent/ guardian, indicating the time, date and reason. Permission will be granted in accordance with the policy of the school. Children in grades K-8 will be released early only when a parent or designated adult reports to the school office to sign them out. Individuals should be prepared to show a photo ID before a student is released.

EQUAL OPPORTUNITY EMPLOYMENT / NOTICE OF NONDISCRIMINATION

All parties, procedures, and policies of the Red Clay Consolidated School District shall clearly exemplify that there is no discrimination in the hiring, training, assignment, promotion/transfer, or discipline of employees, or in the educational programs and activities of students on the basis of race, creed, color, national origin, religion, sex, sexual orientation, age, marital status, handicap, veteran status, domicile, genetic information, or any legally protected characteristic.

CONTENTS

School Calendar	4	Federal Programs	32	Senior Citizens Program	37
Our Schools	28	Food & Nutrition Services	33	Special Education Services	37
Board of Education	30	Guidance & Counseling	33	Student Assessment	38
Adult Education	31	Health Services	33	Student Code of Conduct	38
AHERA Notification (Asbestos)	31	Homework	34	Student Records	38
Anti-Bullying Policy	31	Insurance	34	Summer Session (High School)	38
Books & Equipment	31	Kindergarten Registration	34	Suspension / Expulsion	38
Career & Technical Education	31	Library Media Centers	34	Talented & Gifted / Enrichment Programs	38
Child Abuse & Neglect	32	Notification of Laws Pertaining to School Crimes	35	Transportation	39
Community Use of School Facilities	32	Parent Involvement Policy	36	Truancy	39
Computer-Assisted Instruction & Technology Enhancements	32	Parent-Teacher Conferences	36	Visits to Schools	39
English Learners	32	Parents’ Rights & Responsibilities	37	Volunteers	39
		School Choice	37	Wellness Policy	40

STAY CONNECTED! Follow us online and share your story with #WeAreRedClay.



Red Clay Consolidated School District
1502 Spruce Avenue, Wilmington, DE 19805
302.552.3700 • redclayschools.com

Please visit redclayschools.com
for the latest events and information.



Events may be subject to change. Find the latest information at redclayschools.com.

REDCLAYSCHOOLS.COM

AUGUST 2019

SUNDAY	MONDAY	TUESDAY	WEDNESDAY	THURSDAY	FRIDAY	SATURDAY
				1	2	3
4	5	6	7	8	9	10
11	12	13	14 School Board Meeting @ Cab Calloway School of the Arts, 7 PM	15	16	17
18	19	20	21 Middle School Open House Events	22 Elementary School Open House Events	23	24
25	26 First Day of School: Grades 1-6 & 9 Kindergarten: Split Week	27 First Day of School: Grades 7-8 & 10-12 Kindergarten: Split Week	28 Kindergarten: Split Week	29 Kindergarten: Split Week	30 Schools Closed	31



Events may be subject to change. Find the latest information at redclayschools.com.

SEPTEMBER 2019

SUNDAY	MONDAY	TUESDAY	WEDNESDAY	THURSDAY	FRIDAY	SATURDAY
1	2 LABOR DAY Schools & Offices Closed	3 First Day of School: Pre-K	4	5 Back to School Instrument Night @ Brandywine Springs School, 7 PM	6	7
8	9	10	11 Back to School Instrument Night @ Baltz ES, 7 PM	12	13	14
15	16	17	18 School Board Meeting @ Cab Calloway School of the Arts, 7 PM	19	20	21
22	23 Back to School Nights: 6-8 PM <i>High Schools (including Grade 6-12 Programs)</i>	24 Back to School Nights: 6-8 PM <i>Middle Schools</i>	25 Back to School Nights: 6-8 PM <i>Cooke ES, Forest Oak ES, Shortlidge Academy, Richardson Park ES, Richey ES</i>	26 Back to School Nights: 6-8 PM <i>Baltz ES, Brandywine Springs School, Heritage ES, Highlands ES, Lewis Dual Language ES, Linden Hill ES, Marbrook ES, Mote ES, North Star ES, Warner ES</i>	27	28
29	30 ROSH HASHANAH Schools Closed					

A person is seen from behind, wearing a bright yellow t-shirt. The back of the t-shirt features the words "DREAM BIG" in a large, bold, blue font with a white outline. The text is set within a white graphic that resembles a speech bubble or a jagged-edged box. The background is out of focus, showing what appears to be a workshop or a garage with various tools and equipment.

DREAM BIG

Events may be subject to change. Find the latest information at redclayschools.com.

OCTOBER 2019

SUNDAY	MONDAY	TUESDAY	WEDNESDAY	THURSDAY	FRIDAY	SATURDAY
		1 Back to School Nights: 6-8 PM <i>Meadowood Pre-K & MTP</i>	2	3	4 IN-SERVICE DAY Schools Closed	5
6	7	8	9 YOM KIPPUR Schools Closed	10	11	12
13	14	15	16 School Board Meeting @ Cab Calloway School of the Arts, 7 PM	17	18	19
20	21	22 District Choice Information Night @ Cab Calloway School of the Arts, 6-8 PM	23	24	25	26
27	28	29	30	31 End of First Marking Period		



Events may be subject to change. Find the latest information at redclayschools.com.

NOVEMBER 2019

SUNDAY	MONDAY	TUESDAY	WEDNESDAY	THURSDAY	FRIDAY	SATURDAY
					1 GRADING DAY Schools Closed	2
3	4 School Choice Window Opens	5 School Choice Open Houses: 6-8 PM <i>Linden Hill ES, McKean HS</i>	6 School Choice Open Houses: 6-8 PM <i>Cab Calloway School of the Arts, Richey ES</i>	7 School Choice Open Houses: 6-8 PM <i>Alexis I. du Pont MS, Forest Oak ES</i>	8	9
10	11 VETERANS DAY Schools & Offices Closed	12 School Choice Open Houses: 6-8 PM <i>HB duPont MS, Shortlidge Academy</i>	13 School Choice Open House: 6-8 PM <i>Skyline MS</i>	14 School Choice Open Houses: 6-8 PM <i>Conrad Schools of Science, Mote ES</i>	15	16
17	18 School Choice Open House: 6-8 PM <i>Marbrook ES</i>	19 School Choice Open Houses: 6-8 PM <i>Dickinson Heritage ES</i>	20 School Board Meeting @ Warner ES, 7 PM	21	22	23
24	25 PARENT CONFERENCES Schools Closed	26 PARENT CONFERENCES Schools Closed	27 Schools Closed	28 THANKSGIVING HOLIDAY Schools & Offices Closed	29 THANKSGIVING HOLIDAY Schools & Offices Closed	30



Events may be subject to change. Find the latest information at redclayschools.com.

DECEMBER 2019

SUNDAY	MONDAY	TUESDAY	WEDNESDAY	THURSDAY	FRIDAY	SATURDAY
1	2 School Choice Open Houses: 6-8 PM <i>North Star ES, Stanton MS</i>	3 School Choice Open Houses: 6-8 PM <i>Alexis. I du Pont HS, Lewis Dual Language ES</i>	4 School Choice Open Houses: 6-8 PM <i>Baltz ES, Brandywine Springs School</i>	5 School Choice Open House: 6-8 PM <i>Richardson Park ES</i> District Middle School Choral Festival @ Cab Calloway School of the Arts Theater, 7 PM	6	7
8	9 School Choice Open Houses: 6-8 PM <i>Cooke ES, Warner ES</i>	10 School Choice Open House: 6-8 PM <i>Highlands ES</i>	11	12	13	14
15	16	17	18 School Board Meeting @ Warner ES, 7 PM	19	20	21
22	23 WINTER HOLIDAY Schools Closed	24 WINTER HOLIDAY Schools & Offices Closed	25 WINTER HOLIDAY Schools & Offices Closed	26 WINTER HOLIDAY Schools & Offices Closed	27 WINTER HOLIDAY Schools Closed	28
29	30 WINTER HOLIDAY Schools Closed	31 NEW YEAR'S EVE Schools & Offices Closed				



The Red Clay
LUNCHBOX

Events may be subject to change. Find the latest information at redclayschools.com.

REDCLAYSCHOOLS.COM

JANUARY

2020

SUNDAY	MONDAY	TUESDAY	WEDNESDAY	THURSDAY	FRIDAY	SATURDAY
			1 NEW YEAR'S DAY Schools & Offices Closed	2	3	4
5	6	7	8	9	10	11
12	13	14	15 School Board Meeting @ Warner ES, 7 PM	16	17 End of Second Marking Period	18
19	20 MARTIN LUTHER KING JR DAY Schools & Offices Closed	21 GRADING DAY Schools Closed	22	23	24	25
26	27	28	29	30	31	



Events may be subject to change. Find the latest information at redclayschools.com.

REDCLAYSCHOOLS.COM

FEBRUARY

2020

SUNDAY	MONDAY	TUESDAY	WEDNESDAY	THURSDAY	FRIDAY	SATURDAY
						1
2	3	4	5	6	7	8
9	10	11	12 School Board Meeting @ Warner ES, 7 PM	13	14 PARENT CONFERENCES Schools Closed	15
16	17 PRESIDENTS' DAY Schools & Offices Closed	18	19	20	21	22
23	24	25	26	27	28	29



Events may be subject to change. Find the latest information at redclayschools.com.

REDCLAYSCHOOLS.COM

MARCH 2020

SUNDAY	MONDAY	TUESDAY	WEDNESDAY	THURSDAY	FRIDAY	SATURDAY
1	2	3	4	5	6	7
8	9	10 Red Clay College & Career Fair @ Dickinson, 6:30-8:30 PM	11	12	13	14
15	16	17	18 School Board Meeting @ Warner ES, 7 PM	19	20	21
22	23	24	25	26 End of Third Marking Period Red Clay Elementary Choral Festival @ Cab Calloway School of the Arts, 7 PM	27 GRADING DAY Schools Closed	28
29	30	31				



Events may be subject to change. Find the latest information at redclayschools.com.

REDCLAYSCHOOLS.COM

APRIL 2020

SUNDAY	MONDAY	TUESDAY	WEDNESDAY	THURSDAY	FRIDAY	SATURDAY
			1	2 Red Clay High School Band Festival @ Cab Calloway School of the Arts, 7 PM	3	4
5	6	7	8 School Board Meeting @ Warner ES, 7 PM	9	10 SPRING BREAK Schools & Offices Closed	11
12	13 SPRING BREAK Schools & Offices Closed	14 SPRING BREAK Schools Closed	15 SPRING BREAK Schools Closed	16 SPRING BREAK Schools Closed	17 SPRING BREAK Schools Closed	18
19	20	21	22 Ed Tech Innovator Conference @ Dickinson, 4-7 PM	23	24	25
26	27	28 IN-SERVICE DAY: PRESIDENTIAL PRIMARY Schools Closed	29	30 Red Clay Kindergarten Registration Event at All Elementary Schools, 4:15-6:15 PM		



Events may be subject to change. Find the latest information at redclayschools.com.

MAY 2020

SUNDAY	MONDAY	TUESDAY	WEDNESDAY	THURSDAY	FRIDAY	SATURDAY
					1	2
3	4	5	6	7 Art SMART Show @ Delaware Art Museum, 4:30 PM	8	9
10	11	12	13 School Board Meeting @ Cab Calloway School of the Arts, 7 PM	14	15	16
17	18	19	20	21	22	23
24	25 MEMORIAL DAY	26	27	28	29	30
31	Schools & Offices Closed					

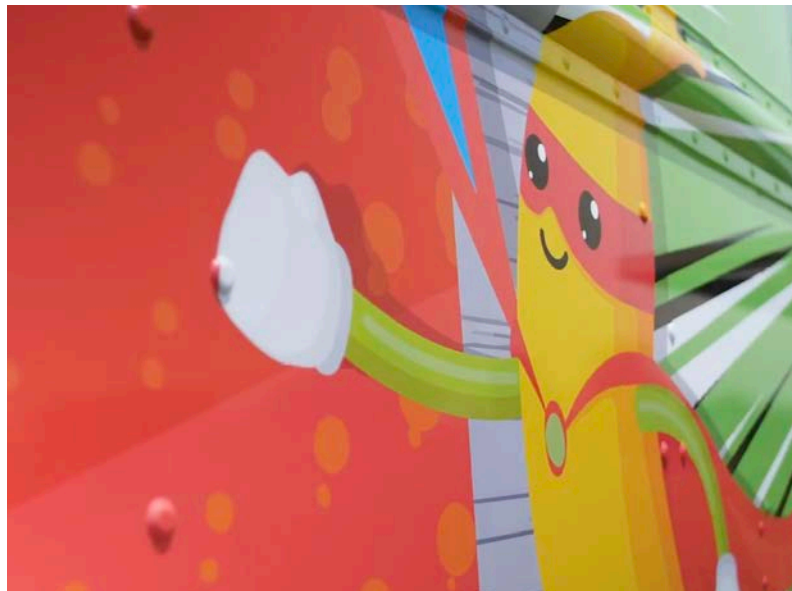


Events may be subject to change. Find the latest information at redclayschools.com.

REDCLAYSCHOOLS.COM

JUNE 2020

SUNDAY	MONDAY	TUESDAY	WEDNESDAY	THURSDAY	FRIDAY	SATURDAY
	1	2	3	4 First State School Closing Program @ Cab Calloway School of the Arts, 6:30 PM	5 Cab Calloway School of the Arts Commencement, 7 PM	6 Commencements: Conrad Schools of Science, McKean HS, Alexis I. du Pont HS, Dickinson HS
7	8 Project Search Closing Program @ Christiana Hospital, 6 PM	9	10 Last Day for Students End of Fourth Marking Period	11 Last Day for Teachers	12 Inclement Weather Day	13
14	15 Inclement Weather Day	16 Groves Commencement @ Conrad Schools of Science, 7 PM	17 School Board Meeting @ Cab Calloway School of the Arts, 7 PM	18	19	20
21	22	23 Credit Recovery & Wagner Summer School Begins @ Stanton MS	24	25	26	27
28	29	30				



Events may be subject to change. Find the latest information at redclayschools.com.

REDCLAYSCHOOLS.COM

JULY 2020

SUNDAY	MONDAY	TUESDAY	WEDNESDAY	THURSDAY	FRIDAY	SATURDAY
			1	2	3	4
5	6 Start of STEM Camps	7	8	9	10	11
12	13	14	15	16	17	18
19	20	21	22	23 End of STEM Camps	24	25
26	27	28	29	30	31	



OUR SCHOOLS

Pre-K

Red Clay Early Years Program at the Early Learning Center

1621 Telegraph Rd, Wilmington
redclayschools.com/eyp
302.434.6087

Red Clay Early Years Program at Lewis Dual Language Elementary School

920 N. Van Buren Street, Wilmington
redclayschools.com/eyp
302.651.2695

Red Clay Early Years Program at Marbrook Elementary School

2101 Centerville Road, Wilmington
redclayschools.com/eyp
302.992.5555

Red Clay Early Years Program at Meadowood

55-A S. Meadowood Drive, Newark
redclayschools.com/eyp
302.454.3400

Red Clay Early Years Program at Anna P. Mote Elementary School

2110 Edwards Avenue, Wilmington
redclayschools.com/eyp
302.992.5565

Red Clay Early Years Program at Richardson Park Elementary School

16 Idella Avenue, Wilmington
redclayschools.com/eyp
302.992.5570

Red Clay Early Years Program at Warner Elementary School

801 W. 18th Street, Wilmington
redclayschools.com/eyp
302.651.2740

Special Schools & Programs

First State School

501 W. 14th Street, Wilmington
redclayschools.com/first
302.428.5848

Groves Adult Education High School

1621 Telegraph Road, Wilmington
redclayschools.com/groves
302.651.2709

Meadowood Program

55-A S. Meadowood Drive, Newark
redclayschools.com/meadowood
302.454.3400

Elementary Schools

Austin D. Baltz Elementary School (K-5)

1500 Spruce Avenue, Wilmington
redclayschools.com/baltz
302.992.5560

Brandywine Springs School (K-8)

2916 Duncan Road, Wilmington
redclayschools.com/bss
302.636.5681

Cooke Elementary School (K-5)

2025 Graves Road, Hockessin
redclayschools.com/cooke
302.235.6600

Forest Oak Elementary School (K-5)

55 S. Meadowood Drive, Newark
redclayschools.com/forestoak
302.454.3420

Heritage Elementary School (K-5)

2815 Highlands Lane, Wilmington
redclayschools.com/heritage
302.454.3424

Highlands Elementary School (K-5)

2100 Gilpin Avenue, Wilmington
redclayschools.com/highlands
302.651.2715

Lewis Dual Language Elem. School (K-5)

920 N. Van Buren Street, Wilmington
redclayschools.com/lewis
302.651.2695

Linden Hill Elementary School (K-5)

3415 Skyline Drive, Wilmington
redclayschools.com/lindenhill
302.454.3406

Marbrook Elementary School (K-5)

2101 Centerville Road, Wilmington
redclayschools.com/marbrook
302.992.5555

Anna P. Mote Elementary School (K-5)

2110 Edwards Avenue, Wilmington
redclayschools.com/mote
302.992.5565

North Star Elementary School (K-5)

1340 Little Baltimore Road, Hockessin
redclayschools.com/northstar
302.234.7200

Richardson Park Elementary School (K-5)

16 Idella Avenue, Wilmington
redclayschools.com/rpes
302.992.5570

Richey Elementary School (K-5)

105 E. Highland Avenue, Wilmington
redclayschools.com/richey
302.992.5535

Shortlidge Academy (K-2)

100 W. 18th Street, Wilmington
redclayschools.com/shortlidge
302.651.2710

Warner Elementary School (3-5)

801 W. 18th Street, Wilmington
redclayschools.com/warner
302.651.2740

Secondary Schools

Alexis I. du Pont High School (9-12)

50 Hillside Road, Wilmington
redclayschools.com/aihs
302.651.2626

Alexis I. du Pont Middle School (6-8)

3130 Kennett Pike, Wilmington
redclayschools.com/aims
302.651.2690

Brandywine Springs School (K-8)

2916 Duncan Road, Wilmington
redclayschools.com/bss
302.636.5681

Cab Calloway School of the Arts (6-12)

100 N. DuPont Road, Wilmington
cabcallowayschool.org
302.651.2700

The Charter School of Wilmington (9-12)

100 N. DuPont Road, Wilmington
charterschool.org
302.651.2727

Conrad Schools of Science (6-12)

201 Jackson Avenue, Wilmington
redclayschools.com/conrad
302.992.5545

Delaware Military Academy (9-12)

112 Middleboro Road, Wilmington
demilacad.org
302.998.3521

Henry B. du Pont Middle School (6-8)

735 Meeting House Road, Hockessin
redclayschools.com/hb
302.239.3420

John Dickinson High School (9-12) & Middle Years Programme (6-8)

1801 Milltown Road, Wilmington
redclayschools.com/dickinson
302.992.5500

Thomas McKean High School (9-12)

301 McKennan's Church Road, Wilmington
redclayschools.com/mckean
302.992.5520

Skyline Middle School (6-8)

2900 Skyline Drive, Wilmington
redclayschools.com/skyline
302.454.3410

Stanton Middle School (6-8)

1800 Limestone Road, Wilmington
redclayschools.com/stanton
302.992.5540

RED CLAY CONSOLIDATED SCHOOL DISTRICT BOARD OF EDUCATION



Catherine H. Thompson, President
Term Expires: 2020
Cathy.Thompson@redclay.k12.de.us



Martin A. Wilson, Sr., Vice President
Term Expires: 2020
Martin.Wilson@redclay.k12.de.us



Adriana L. Bohm
Term Expires: 2023
Adriana.Bohm@redclay.k12.de.us



Jason P. Casper
Term Expires: 2024
JasonP.Casper@redclay.k12.de.us



Jose Matthews
Term Expires: 2023
Jose.Matthews@redclay.k12.de.us



Faith R. Newton
Term Expires: 2021
Faith.Newton@redclay.k12.de.us



Ashley E. Sabo
Term Expires: 2022
Ashley.Sabo@redclay.k12.de.us

The Red Clay Consolidated School District is governed by an elected seven-member Board of Education. Board members, representing seven nominating areas of the district, are elected to five-year terms. Elections are held in May for terms expiring on June 30 of that year. Members serve without pay.

The Board of Education establishes the policies, rules and regulations for the school district. They employ the Superintendent, who in turn administers those policies, rules and regulations, and oversees the day-to-day operation of the schools. The Board of Education normally meets once a month on the third Wednesday. As circumstances dictate, the Board may hold additional meetings. The Board of Education encourages public attendance at, and participation in, its meetings.

At each board meeting, a period of 30 minutes is set aside for public recognition. The Board may also set aside an unspecified period of time prior to the close of each session for further public comment. When the Board has before it a matter of extraordinary public interest, time may be allotted for public input after the motion is made and before the vote is taken.

If a member of the public is seeking immediate Board action on any issue, the Superintendent must be notified in writing at least one week prior to the board meeting. Items presented without such prior notice are likely to be taken under advisement by the Board, with a response assured by no later than the next regular board meeting. Persons wishing to speak are requested to:

- complete and submit a sign-up slip, which is available at each meeting;
- step to the microphone and identify themselves by name, address, and organization they represent, if any;
- limit their remarks to three minutes on any one issue; and
- provide the Board with a written copy of any formal presentation.

Comments or complaints about individual district employees will not be discussed at public board meetings. Such matters should be brought to the attention of the Superintendent.

ADULT EDUCATION

Red Clay's Adult Education program provides a wide range of offerings designed to meet the diverse needs of the adult student. James H. Groves Adult High School, providing high school diploma programming for the adult learner and out-of-school youth, is the cornerstone of the adult programs. Classes are offered at the Red Clay Center, 1621 Telegraph Road, Wilmington, DE 19804. Adult Basic Education, English as a Second Language (ESL), Jobs for Delaware Graduates (JDG), and GED provide specialized instructional programs for adults during the school year and the summer. Red Clay's Adult Continuing/Community Education Program (ACCEP) offers continuing education for adults in a variety of subjects, from cooking to foreign languages and defensive driving. The lifelong learning programs are offered in a low-cost, short-term, non-credit format. For more information, please call the Office of Adult Education at 302.651.2709.

AHERA NOTIFICATION (ASBESTOS)

This notification is being provided to all Red Clay staff and parents as a part of the requirements of the Asbestos Hazardous Emergency Response Act (AHERA) 40 CFR 763.93(g) (4), 40 CFR 763.84 (c), 40 CFR 763.93 (e)(10), 40 CFR 763.84 (d) legislation.

For over 15 years, Red Clay has retained Batta Environmental to conduct the required, routine AHERA inspections and accordingly Batta Environmental has developed a Management Plan, which includes the required surveillance inspection of the district's schools every six months. The results of these inspections confirmed that the ACM in our facilities do not pose any immediate health hazards nor are expected to as long as they continue to be properly maintained. The Inspection and Management Reports for the facility are on file in the school's main administrative office and are available to anyone for their inspection.

Please be assured that the district administration treats complete compliance with the AHERA regulations and all environmental issues seriously and will continue to make every effort to provide all of our building occupants with a healthful facility.

ANTI-BULLYING POLICY

Red Clay is committed to maintaining a safe learning environment for all students. A significant part of that commitment involves our policy regarding bullying.

Each school has an Anti-Bullying Committee that meets to ensure that the staff and students are being proactive in addressing bullying concerns. State law requires school districts to address cyberbullying as well. Cyberbullying is bullying that occurs online but has a substantial impact on a student's learning environment.

In accordance with state law, all allegations of bullying or cyberbullying are investigated and reported to the State Department of Education. Substantiated allegations are treated as any other school disciplinary issue and may result in suspension or other disciplinary actions against the offender.

A complete copy of the Anti-Bullying Policy can be found in the Student Code of Conduct. If a parent, student or staff member has a concern about a bullying issue, they should contact their school administration, the Office of Public Safety (302.552.3775) or the State of Delaware Attorney General's Office of the Ombudsperson (800.220.5414).

BOOKS & EQUIPMENT

Red Clay provides all textbooks, materials and equipment required in the instructional program for all students. Fees may be charged for supplementary materials used in projects, which become the student's personal property. Students may also be charged for the cost of lost or damaged school property, or the replacement of loaned items not returned.

Students may also be issued technology to support their education. The district may require an insurance fee and/or additional guardian signatures as per the 1:1 policy.

CAREER & TECHNICAL EDUCATION

Career and Technical Education programs provide support for student academic performance, assist in drop-out prevention, and equip students with knowledge and skills needed for career and college readiness and success in a global economy. With the support of supplemental state and federal resources, we are able to provide professional development and enhance and upgrade our facilities and programs to ensure they are aligned to academic, technical and industry standards. The most important focus is assisting students in meeting standards in preparation for high-skill, high-wage, high-demand occupations in a technologically driven economy and culture. Leadership skills, STEM opportunities, employability skills and academic integration support students in the application and transfer of the knowledge and skills gained in Career and Technical Education.

CHILD ABUSE & NEGLECT

Delaware law requires all school employees to report immediately any suspected physical or sexual abuse of children, or any instance of neglect or improper care. Such reports are made directly to state authorities.

COMMUNITY USE OF SCHOOL FACILITIES

All responsible individuals, groups and organizations are welcome to request the use of district facilities under the following conditions: the desired facility is not already scheduled for use at the requested time; the use of the facility will be consistent with the educational program of the district; the use of the facility shall be for educational, cultural, civic, political, or recreational purposes. To arrange for the use of a district facility, the individual in charge should contact the school principal or building administrator to determine availability of the facility. A fee may be charged to cover costs incurred by the district.

COMPUTER-ASSISTED INSTRUCTION & TECHNOLOGY ENHANCEMENTS

Red Clay recognizes that technology is integral in today's schools to provide infrastructure support, information and, most important, instruction. Technology is a part of our students' lives and we look for ways to provide up-to-date hardware and software applications and programs for all students.

Students have access to 1:1 technology during the day and secondary students may use the device outside of school as per district policies. This enhanced technology is a privilege and families are reminded that the device is Red Clay property and use of it is for instructional purposes. The devices on loan to the students should be used as a learning tool. They should be charged daily and students must adhere to the acceptable use policy. Red Clay recognizes that with the implementation of the 1:1 Chromebook initiative there is a need to protect the investment for the district, as well as the student and parent/guardian. The district will provide an Accidental Protection Plan for a small fee.

FEDERAL PROGRAMS

Red Clay receives over \$12 million in state and federal funds through various block, competitive and categorical grants. These monies support the district strategic plan through supplemental programs for high-quality professional development; reading and mathematics improvement; prevention activities; parent engagement; school readiness and special education. Some non-public schools in Red Clay are allocated resources from federal monies.

The largest federal program is Title I, which provides supportive educational services to students in high need buildings to help them to meet challenging academic standards. For more information, please call the Office of Federal Programs at 302.552.3772.

ENGLISH LEARNERS

The Office of English Learners is committed to providing supports and services to all English learners (ELs) in order to make their learning experience successful. All Red Clay schools provide language development support to our ELs. Students who qualify for services will receive the additional support required to increase their English language skills. All ELs have access to the general education curriculum, as well as additional resources that target English language development.

Once a student is registered and there is a language other than English spoken in the home, the information is sent to the Office of English Learners in order for the student to be assessed. Based on their results, the level of support and services to be provided is determined. After students are identified as ELs and are receiving the appropriate instructional support, they will continue to be assessed annually with the ACCESS for ELs until they meet the exit criteria set by the Delaware Department of Education.

The Office of English Learners provides interpreters to families for parent conferences, PTA/PTO meetings, open house nights, family fun nights, school board meetings, and other school and district events. The Office of English Learners also translates documents that are sent home to families. These documents include student data cards, lunch menus, Student Code of Conduct, school newsletters, nurse forms, School Choice forms, referendum information, transportation forms, website information, school calendars and teachers' notes home. Families should inform the school during registration of any interpretation or translation support needed.

FOOD & NUTRITION SERVICES

Through the creative culinary efforts of our school nutrition team, we make healthy food enjoyable to students while ensuring adequate nutrition to support an optimal learning environment.

- **How do we stack up on nutrition?** Red Clay Cafe's meals are developed by Registered Dietitians using the latest research for healthy, well-balanced meals. All recipes are tested and perfected by our experienced culinary team as we strive to provide innovative options to get students eating nutritious foods that appeal to them. Through sourcing food locally and verifying healthy ingredients, we are able to provide a rich cafe experience for our students.
- **Keep it fresh and local with Farm to School.** Red Clay schools serve a variety of fresh fruits and vegetables daily, many of which are sourced from local farms.
- **Go whole grain.** All grains we serve are whole grains. Many are also freshly baked at our in-house bakeshop!
- **Snack healthy.** All snacks and beverages are subject to strict nutrition standards and are required to be whole grain rich, a protein, a fruit or vegetable, or a dairy product.
- **Nutrition on the go.** Red Clay has a food truck! The food truck will be coming to a school near you to prepare and serve healthy meals in true mobile style.
- **Serving breakfast, lunch, snack and dinner year-round!** We offer snack and dinner programs at a variety of schools where students are participating in afterschool programs. Additionally, our meal services continue into the summer for summer programs, too!
- **Technology.** Menus and nutritional information is available through our School Menus smartphone app or online on our interactive menu at redclaycafe.com. Be sure to follow @redclaycafe on Facebook, Instagram and Twitter.

How does my student participate in the Red Clay School Meals program at school?

Each student is assigned a PIN number that they will use to make participate in the meals program. This PIN number is the same number that is assigned when the student enrolls in the district.

How can I make prepayments into my Students Account?

You can make a prepayment into an account by bringing in a check or cash to the school cafeteria, or online at paypams.com.

What are Community Eligibility Provision (CEP) Schools?

The Community Eligibility Provision (CEP) program is a USDA child nutrition program where all students receive meals at no charge regardless of eligibility. Students attending a CEP school will not be required to complete a household meal benefit form to receive benefits. If a family has a student(s) attending a CEP school and another student(s) attending a non-CEP school, the family will need to complete a Meal Benefit for the student(s) attending the non-CEP school. For a list of schools participating in the CEP program, please visit redclaycafe.com.

How do I apply for Free and Reduced Priced meals?

A Meal Benefit Form will need to be completed each year. Students who were eligible for free and reduced priced meals last year will continue to be eligible through October 15, 2019, however, families will need to reapply by October 1, 2019. Meal Benefit Forms can be obtained at any school office, online at redclaycafe.com, or by calling the Office of Nutrition Services at 302.992.5580.

Reminder: Red Clay no longer charges for reduced price meals. Students who qualify for reduced price meals will not be charged the reduced price meal fee.

GUIDANCE & COUNSELING

Guidance and counseling services are available to students in grades K-12. Counselors work with students, parents, staff members and community agencies to identify and implement services for students so they can achieve academic success. Counselors also help students identify their interests and abilities, and shape their educational programs accordingly.

HEALTH SERVICES

A registered nurse is on duty in each school and serves as the health expert within the building. School nurses provide first-aid care for children who are injured or become ill, and provide care coordination for children who suffer from chronic illness. In all cases, every effort is made to contact the family. In the event of an emergency, the child may be sent directly to an emergency treatment center, with parent notification being made as soon as possible. It is required by Delaware state regulation that an up-to-date Student Data Card be maintained by the nurse for every student. This card contains information relating to contacting parents and physicians, as well as pertinent health information. Please notify the school if there are any changes in such information.

School nurses may administer over-the-counter medication (if appropriate) and prescription medications. All medications administered in school require a written request from a parent or guardian. All medication must be in the original container. Prescription medication shall be provided to the school in the most current original container, properly labeled with the student's name, healthcare provider's name, name of medication, dosage, and how and when it is to be administered. School nurses screen students for weight, height, vision, scoliosis and hearing according to regulation.



HOMEWORK

Homework can be a natural extension of the educational program, reinforcing and enriching daily class work. Homework should offer an opportunity for students to apply what they have learned in school. Homework policies will vary. Please contact your child's school or teacher for more information.

INSURANCE

A voluntary student accident insurance plan is made available to students each year through an independent insurance company. The district provides special insurance for those students playing interscholastic sports. This insurance is secondary to coverage already obtained by the athlete's parents/ guardians.

KINDERGARTEN REGISTRATION

Kindergarten enrollment is mandatory under Delaware law. For September enrollment, children must be 5 years of age on or before August 31. Red Clay offers full-day kindergarten classes at all elementary schools.

Lewis Dual Language Elementary School offers a Spanish and English language immersion program, full-day kindergarten. Interested parents need to complete an application form at the school. Space is limited. Mote and Marbrook offer a Spanish Kindergarten Immersion Program, Linden Hill offers a Mandarin Kindergarten Immersion Program. Space is limited. Applications are available at the school and on the school website.

School offices are open for registration of students from 9 AM until 3 PM on school days. To register a child, parents must have proof of current residence, the child's birth certificate, immunization records, and physical examination results. Registration events are also held in April and May.

LIBRARY MEDIA CENTERS

Each school in the district is equipped with a library media center and a full- or part-time librarian. Our librarians are committed to helping students use different types of information resources such as books, magazines, videos, online databases and the Internet. They also provide enriching experiences such as maker spaces, video creation, story times, cultural activities and book talks.

Red Clay has a web-based circulation system. All district library collections are searchable for students, parents, and guests. Students may go online to see what books they have checked out, place holds, and create personal bibliographies. Catalogs are available at destiny.redclay.k12.de.us.

The district provides access to eBooks and audiobooks through MyON for elementary students and OverDrive for secondary students. Both are accessible through Clever with students' RedClaySchools login.

The district allocates a yearly budget to support these centers. To maintain the collection, students will be responsible for lost or damaged books.

NOTIFICATION OF LAWS PERTAINING TO SCHOOL CRIMES

In accordance with 14 Del. Code Section 4131, parents and students are hereby notified that it is a crime to make a false statement knowing that the statement is likely to cause evacuation of a building, place of assembly, or facility of public transportation, including any kindergarten, elementary, or secondary school. Such false statements are punishable by (i) imprisonment up to 1 year (for first time offenders under 18 years of age) or 3 years (for all other offenders), (ii) a fine of up to \$2,500 and (iii) a minimum of 100 hours of community service.

Parents and students also should be aware that it is unlawful to disturb school while it is in session or to willfully destroy any school property. Persons found to have willfully destroyed school property or disturbed school while in session shall be fined \$20 or imprisoned for up to 30 days.

Delaware law also requires school employees who have reliable information to believe that certain crimes have occurred on school property or at a school function, to report the crime to their principal, who must in turn make reasonable efforts to notify the parents of any juvenile victim and report the crime to the police immediately, to be followed by a written report within 3 business days, or, if the alleged perpetrator is under nine years old and the crime is a misdemeanor, to the Superintendent, who must report the crime to the Department of Education. The reporting obligations are as follows:

a) A school employee must report to his or her principal whenever he or she has reliable information that would lead a reasonable person to believe that a student or school volunteer has been the victim of a violent felony, an Assault III, or an Unlawful Sexual Contact III on a school property or at a school function.

b) A school employee must report to his or her principal whenever he or she has reliable information that would lead a reasonable person to believe that a school employee has been the victim of a violent felony, an Assault III/ an Unlawful Sexual Contact III/ an Offensive Touching, or Terroristic Threatening on school property or at a school function.

c) A school employee must report to his or her principal whenever he or she has reliable information that would lead a reasonable person to believe that a student has been the victim of a violent felony, an assault in the third degree, or any sexual offense, when the school employee has reliable information that would lead a reasonable person to believe that the crime has been committed by another school employee, regardless of whether the offense occurred on school property or at a school function.

d) A school employee must report to his or her principal whenever he or she has reliable information that would lead a reasonable person to believe that a person has in his or her possession on school property or at a school function, any controlled substance prohibited by Title 16 of the Delaware Code, any deadly weapon, destructive weapon, dangerous instrument, or incendiary or explosive device. The principal shall conduct a thorough investigation and, if the investigation verifies that good reason exists to believe that a crime has been committed, the principal shall immediately notify the appropriate police agency.

In addition, school employees have an obligation to report to their principal any sexual harassment (as defined in Title 11 of the Delaware Code) of a student that may have occurred on school property or at a school function. Immediately after conducting a thorough investigation to determine if good reason exists to believe that harassment has occurred, the principal must notify the victim's parent of that determination, so long as the parent is not alleged to be the offender.

Whenever a police agency has determined that probable cause exists to believe that a student has committed a crime that must be reported to the police, the student may be referred to internal or external alternative services for intervention of an appropriate nature and duration or shall be given an internal or external suspension until a parent conference is held to review the student's educational placement.

Before a student who has been suspended or sent to alternate placement pursuant to 14 Del. Code Section 4112(d) shall be returned to the general student body, (i) a parent of the student is required to attend a parent conference with the Superintendent or designee, to discuss the offense and review the student's educational placement and (ii) when the victim is required to be present at the school, the principal must attempt to notify the victim or, if the victim is a juvenile, the victim's parents.

Following the start of each school year, the Department of Education shall, upon request, provide to the principal of any school a list of the students enrolled in that school for the coming year who committed offenses during the previous year which were reported to the Department of Education. The list shall remain confidential and shall be used by the principal only for the purpose of identifying students who may be in need of beneficial programs such as mentoring.

PARENT INVOLVEMENT POLICY

The purpose of the Parent Involvement Policy is to support and secure an effective partnership among Red Clay schools, parents, and the community. The expectation is that the Red Clay Consolidated School District Board of Education will actively involve parents in the joint development of the district's parental involvement policies, programs, and activities. All employees are expected to comply with this policy.

Parental involvement is defined as the participation of parents in regular, two-way, and meaningful communication involving student academic learning and other school activities, including ensuring that parents play an integral role in assisting their child's learning, that parents are encouraged to be actively involved in their child's education, and that parents are full partners in their child's education and are included, as appropriate, in decision making and on advisory committees to assist in the education of their child. To promote collaborative partnerships among schools, parents, and the community, the district will:

- incorporate this policy into its educational (strategic) plan;
- plan and operate, with meaningful consultation with parents, programs, activities, and procedures for the involvement of parents in all of its schools;

- work with its schools to ensure that a Red Clay Parent Advisory Council is established and that required school-level parental involvement programs exceed legislative requirements;
- provide full opportunities for the participation of parents with limited English proficiency, parents with disabilities, and parents of migratory children by disseminating information and school reports in an understandable and uniform format and by offering alternative formats upon request;
- involve parents of children served in Title I, Part A schools in decisions about how one percent of Title I, Part A funds reserved for parental involvement is spent, and ensure that not less than 95 percent of the one percent reserved goes directly to the schools.
- inform parents and parent organizations about the resources available to support them in the education of their children.
- have representation on the State Parent Advisory Council.
- provide the necessary coordination, technical assistance, materials and training, and other support to assist schools and their personnel in planning and implementing effective parental involvement activities to improve student academic achievement and school performance and to help parents work with their children.

- strive to strengthen its efforts to build schools' and parents' capacity for strong parental involvement in order to ensure effective involvement of parents and to support a partnership among the schools, parents, and community.
- work to improve student academic achievement by assisting parents in understanding State standards, District and school assessments, and progress monitoring.
- educate its schools, with assistance from parents, about the value and utility of contributions of parents, including how to customize outreach and communications and work with parents as equal partners to implement and coordinate parent programs.

This policy shall be:

- reviewed annually with the involvement of parents and monitored by the Board and the Superintendent, with feedback from the Office of Federal and Regulated Programs and the Red Clay Parent Advisory Council.
- distributed to all parents, especially those with children participating in the Title I program.
- incorporated into the district's consolidated application.

For more information, please call 302.552.3772.

PARENT-TEACHER CONFERENCES

Parent-teacher conferences are an essential component of every child's education. Careful planning can help you get the most from your conference.

- If you cannot make the scheduled time, call the school to schedule a more convenient meeting.
- If possible, arrange for childcare so that you and the teacher can talk without distractions.

- Talk to your child about school. Are there any concerns he/she would like to discuss?
- Where possible, both parents/ guardians should plan to attend the conference. If only one parent attends, talk it over beforehand to be sure all questions are covered.
- Arrive early if possible; teachers are on a very tight schedule on conference days.

- Take notes as you and the teacher talk; write down points for future reference.
- When you get home, discuss the conference with your child and your spouse.

By stressing the positive points and developing a plan to overcome challenges, you can use the conferences to improve your child's education.

PARENTS' RIGHTS & RESPONSIBILITIES

Red Clay has adopted policies requiring students to meet our Board of Education's standards and also, for promotion in grades K-12. The Board believes that learning best takes place when there is a shared effort, interest and motivation by parents, school and district staff. We are committed to your child's success in school and promise to work together to promote student achievement.

The school and district have a responsibility to:

- Notify parents when their student's absences become excessive and/or attendance interferes with student progress according to the Red Clay Attendance Policy
- Provide appropriate instruction that reflects state and district standards
- Respond to parent communications within three days
- Promote consistency in following the Red Clay Student Code of Conduct to ensure the safety and well-being of all
- Share information about outside resources to support the education of students, keeping students properly prepared for school (i.e., well rested, fed, clothed, clean and health needs met)
- Provide parents information related to instructional programs

As your child's first teacher, parents have a responsibility to:

- See that your child attends school daily, as outlined in the attendance code
- See that your child's homework is completed on time and eliminate distractions (television, video games, computer play)
- Respond to school staff communications (conferences, telephone calls or letters) within three days

- Accept responsibility for your child's school behavior outlined in the Student Code of Conduct by supporting the district's discipline policies
- See that your child is properly prepared for school (i.e., well rested, fed, clothed, clean and has all health needs met and is ready to learn)

SCHOOL CHOICE

All schools in the district participate in the statewide School Choice program, which allows Delaware parents to file a choice application for their child to attend a school regardless of the student's area of residence. Applications are accepted from the first Monday in November to the second Wednesday in January. Enrollment will be based on available space and enrollment criteria. Parents are required to provide transportation to the Choice School or to the nearest attendance zone bus stop. For more information, please call the Office of School Choice at 302.552.3789, or view the full Choice Policy at redclayschools.com.

SENIOR CITIZENS PROGRAM

In cooperation with the Blue Hen Conference, all Red Clay high schools offer free admission to sporting events to persons on social security. For more information, please call the high schools.

The Adult Continuing Education Program offers discounts on course fees to persons 62 years and older. For more information, please call 302.651.2709.

VIP passes are available to persons 62 years and older through the Office of Communications. These passes provide free admission to school events, including drama productions, except certain sporting events and graduations. For more information, please call the Office of Communications at 302.552.3716.

SPECIAL EDUCATION SERVICES

Red Clay provides services and supports for students with disabilities identified under the Individuals with Disabilities Education Act (IDEA) or Section 504.

For students identified under IDEA, an Individualized Education Program (IEP) is designed to provide free and appropriate educational services in the least restrictive setting. IEP teams meet a minimum of once per year to design services and supports to meet student needs. IEPs include specially designed instruction, accommodations and modifications that address individualized needs including but not limited to academic, social/emotional, executive functioning, personal care, life skills and therapeutic components (e.g., physical, occupational, speech/language).

For students eligible for Section 504 plans, the 504 team meets annually to determine appropriate supports to address all major life activities that are impacted by the student's disability.

The Office of Special Services supports schools in the implementation of IDEA and Section 504 requirements.

For questions about IDEA or Section 504, please contact Sarah Celestin, Ed.D., Director of Special Services, at 302.552.3773 or sarah.celestin@redclay.k12.de.us.

STUDENT ASSESSMENT

Red Clay students participate in annual statewide tests and various district tests. Most statewide testing occurs in the spring. Students in grades 8-10 take the PSAT. The State of Delaware test for 11th graders is the SAT, which is administered during the school day. Students in grades 3-8 take state tests (Smarter) in English Language Arts and Mathematics. Students in grades 5 and 8, and students in a high school Biology course, take the state Science test. Students in grades 4, 7 and 11 take the state Social Studies test.

Literacy, reading and mathematics assessments are given three times a year in kindergarten through ninth grades to identify and support students with learning needs. Students also take district common exams throughout the year. In addition, English learners take the ACCESS test to measure English language proficiency. Students with significant cognitive disabilities take the alternative state tests. State and district tests, in combination with classroom assessments and other assessments designed to monitor student progress, provide teachers with valuable data for planning each child's educational program.

STUDENT CODE OF CONDUCT

Principals, teachers, parents, and students developed the Red Clay Student Code of Conduct. It sets forth clear, concise guidelines for student behavior, and spells out the disciplinary actions that can result from violations of the Code. Copies of the Code and orientation programs are provided to all students. Students are instructed to take the Code home for their parent's/guardian's review. Additional copies are available in all school offices. The Code is also available in Spanish. For questions about the Student Code of Conduct, please contact your school principal, or the Director of School Operations at 302.552.3753.

STUDENT RECORDS

The district maintains those student records necessary to administer students' educational programs. The records are kept on file in the school office. Parents and students over 18 years of age have the right to inspect their records, and to challenge the appropriateness of any material in the records. The records are used by school employees only in the normal course of their duties. The records may not be released to third parties without written permission of parents or students over 18 years of age.

The district recognizes the need to protect student information and privacy while promoting educational and extra-curricular activities in district and outside media. Federal law (FERPA) permits the district to release directory information under limited circumstances. Directory information is information about a student that is generally not considered an invasion of privacy, such as name, address, photograph, activities, and sports. If you wish to opt-out of the district releasing this information or including your child in articles and photos, please visit redclayschools.com/forms or obtain an opt-out form from your child's school office.

SUMMER SESSION (HIGH SCHOOL)

Red Clay offers a summer school session each year for students in grades 9-12. The summer program provides remediation and make-up classes to replace failing or low grades. Fees are charged for the high school summer program, and are based on the length and nature of the course(s) taken. For more information, please call the Summer School Office at 302.552.3751. Other district programs also offer summer sessions to assist identified students.

SUSPENSION / EXPULSION

Removal of a student from the educational program is a serious step, and is taken only in accordance with the disciplinary provisions of the Student Code of Conduct. The primary purpose of suspension is to bring the staff, student, and parents together to discuss the violation of the Code, and to develop a program for future compliance. Expulsion can result from serious or repeated violations of the Code. Parents are notified in writing whenever a student is suspended, or procedures for Due Process are initiated.

TALENTED & GIFTED / ENRICHMENT PROGRAMS

All Red Clay elementary schools offer either a Talented and Gifted (TAG) program or an Enrichment program. These programs provide enrichment to the core academic program through the provision of challenging and different content and aligned skill development. Critical thinking skills are taught according to Bloom's Taxonomy (e.g., comprehension, application and analysis), problem solving, classifying, communicating orally and visually, and research.

Beginning in third grade, students in the pull-out TAG program are selected by testing, achievement information, assessment results, teacher recommendations, and task commitment. Enrichment programs vary by school. Beginning with grade 6, accelerated classes are offered in mathematics and ELA. Students may also choose to enroll in Advanced Placement courses while still in high school. For more information, please contact your school principal, or the Office of Curriculum and Instruction at 302.552.3756.

TRANSPORTATION

To qualify for school bus transportation, students must live within their school's attendance zone, live at least one mile from school if in grades K-5, or two miles if in grades 6-12. Walking limits may be waived for non-choice students with disabilities or when unique hazards are deemed by state officials to make walking unsafe.

Attendance zone restrictions may be waived for students enrolled in certain districtwide programs, such as Cab Calloway School of the Arts, Conrad Schools of Science and the Dickinson Middle Years Programme. Transportation for these programs will be provided in accordance with law. Other transportation services are provided to accommodate those students participating in school activities. Activity bus stops are more like hub-stops and may be different than a student's regular bus stop.

Bus route information is mailed to parents prior to the opening of school. Please make sure your child's school has the correct address and phone number on file to be used for pick up and drop off. Transportation will be assigned based on the address provided by the school. Any changes to the pick-up or drop-off address after the mailers have been sent, may result in a minimum 48-hour delay to your student's transportation.

Students are assigned one pick-up and one drop-off stop. Permission will not be given for a student to ride a different bus, except in true emergencies. Changing bus assignments for social events, school projects, parental vacations, running late, forgotten early dismissals, to visit another student, daycare closure, or to allow multiple drop-off locations for different days are not acceptable reasons. All students who are considered a "must be met" (i.e., kindergarten, pre-k, special needs), must be received at the bus door by a parent or authorized guardian unless a "must be met" waiver is on file with the Transportation Department.

WHERE'S THE BUS?

For the most up-to-date information on bus arrivals, download the [WheresTheBus app](#).

1. Go to [WheresTheBus.com](#).
2. In the Parents section, click "Set up account" and choose Red Clay.
3. Enter your child's information.
4. Once your information is validated, you will receive an email with instructions to download the app.

TRUANCY

State statute requires that students attend school and be declared truant if the student is absent more than three days without a valid excuse. The penalties for the parent and student who is adjudicated guilty of truancy vary from parental fines of \$25 minimum to \$300 for the first offense, to \$230 not to exceed \$1,500 for the third or subsequent offense, and imprisonment of not more than 10 days for the first offense, and up to 30 days for the third and subsequent offenses. Parents may also be required to perform community service in place of a fine. Penalties applicable to a student adjudicated as truant are set forth in Section 2730, and include community service; counseling; substance abuse evaluation; mental health treatment; curfew; suspension and revocations of permits and license, including driver's license; prohibition of the student's participation in any extra-curricular activity or social event at the school; and recommendation that the student enroll in alternative education.

VISITS TO SCHOOLS

Parents and other community residents are always welcome to visit Red Clay schools and program. We ask that you call ahead to schedule your visit in order to make it more meaningful. The principal can make sure the people you wish to see are available, and let you know when certain programs are in operation. Please contact the school office for the official Red Clay visitors policy guidelines. The following procedures will be in effect in all school buildings in Red Clay, and we ask your cooperation in following them. The district's objective is to promote a safe and welcoming learning environment for all learners.

- All visitors are required to use the main entrance to the building.
- All visitors are required to report to the main office immediately upon entering any school building.
- All visitors will be required to leave a picture ID in the office.
- All visitors will be asked to sign in and will be issued a visitor's badge.
- Visitors are required to wear the badge at all times while in the school building.
- Visitors are required to sign out, pick up their picture ID, and return the visitor's badges when exiting.

VOLUNTEERS

The educational program of Red Clay is greatly enriched by the talents and time donated by volunteers. Volunteer commitments can vary (daily, weekly, or on occasion). Please contact your local school for specific procedures and requirements for volunteers.

Parents are welcome to attend our District Wellness Committee meetings to discuss wellness initiatives in Red Clay!

- September 17, 6:00-7:30 PM at the Marbrook Elementary School playground (rain location: school cafeteria). Call 302.740.1786 if you need help finding the location.
- December 10, 4:30-6:00 PM at the Stanton Middle School Annex, Nutrition Conference Room
- February 11, 4:30-6:00 PM at the Stanton Middle School Annex, Nutrition Conference Room
- April 21, 6:00-7:30 PM at the Marbrook Elementary School playground (rain location: school cafeteria). Call 302.740.1786 if you need help finding the location.

WELLNESS POLICY

The Red Clay Consolidated School District recognizes that student wellness and proper nutrition are related to students' physical wellbeing, growth, development and readiness to learn. We are committed to providing a school environment that encourages student wellness, proper nutrition, nutrition education and regular physical activity as part of the total learning experience.

Wellness Mini-Grants in Schools! Each year, the Wellness Committee awards grants to staff members who would like to set up wellness initiatives in their school.

Healthier United States School Challenge (HUSSC) Awards. HUSSC is a voluntary national certification that all Red Clay schools have achieved, demonstrating the healthy environment in each school.

Nutrition Education. We train all of our physical education teachers to deliver evidence-based nutrition education to students.

Who is involved in the Wellness Committee? The Red Clay Wellness Committee consists of student, parent, staff, school board and community representatives. Its mission is to promote the district's wellness policy and to monitor and evaluate district policies associated with or impacting wellness. For more information, please visit redclayschools.com and click on Wellness under the Department menu, or contact Jessica Farrand at Jessica.Farrand@redclay.k12.de.us.

STAY CONNECTED! Follow us online and share your story with #WeAreRedClay.

